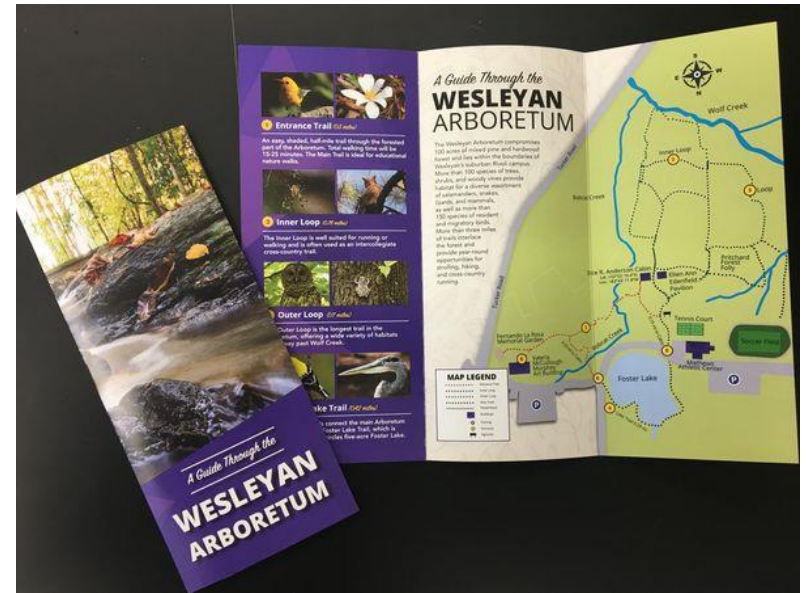




# Wesleyan College Arboretum Community Extension

As a member of the Macon-Bibb community you are cordially invited to consider participation in five new community outreach programs, scheduled to start in Fall of 2024:



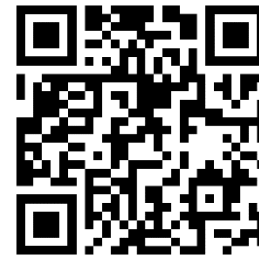
Friends of the Arboretum

Music in the Arb

Wesleyan Arboretum Farm to Table

Adopted Grove and Trail Extension

Sustainability and Environmental Advocacy Colloquia



[ACE  
interest  
survey](#)

[Arboretum  
homepage](#)



# FotA – Friends of the Arboretum

- The Wesleyan College Arboretum with its 100 acres of urban forest, 3 miles of trails, and 5 acre Foster Lake is maintained by volunteer labor for open access by the College and the communities it serves.
- The natural trails of the Arb are extensively used by members of the greater Macon-Bibb community for walking, jogging, exercising dogs, and enjoying an oasis of tranquility.
- Friends of the Arboretum is an auxiliary group which gives you the opportunity to support this unique outdoor resource for yourself, your family, and your neighbors in central Georgia.
- Your contribution may be expressed through either monetary support or the contribution of labor to maintain and enhance the forest, lake, and trails.
- As a member of FotA, you will be invited to share with fellow members in unique social, experiential, and educational events throughout the year and you will be offered priority and discounts on other Arb programs and events.



*Spring 2016*  
**Arboretum Trail Day**



**Sunday April 10**  
**1 - 3 PM**

~ Remove invasive plants ~  
~ Maintain trails ~  
~ Build a bridge! ~

Meet at the Edenfield Pavilion in the Wesleyan College Arboretum.

Tools and refreshments provided. Wear work clothes and sturdy shoes.

**Free Arboretum t-shirt!**  
while supplies last

(\* Rain cancels)



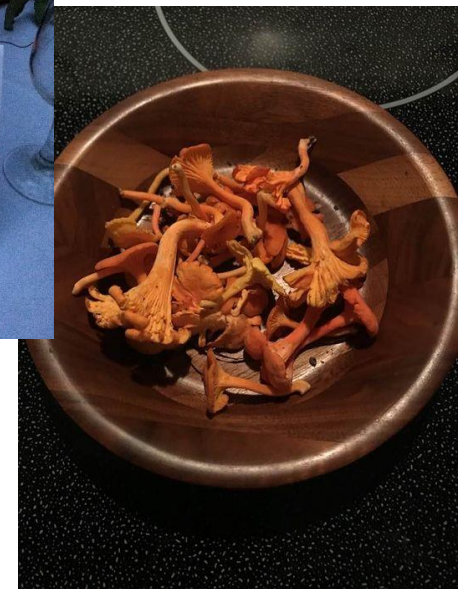
# MitA – Music in the Arb

- The Anderson Cabin and Edenfield Pavilion are unique venues for enjoying folk and classical music performances surrounded by Nature.
- Music in the Arb brings local and regional musical artists to these venues to share their talent with you in an intimate, small audience setting.
- Music in the Arb encourages you to share food and fellowship with these exceptional and often under-appreciated musicians.
- At Music in the Arb live concerts you can interact directly with local support networks to share your appreciation of music with your Macon and Wesleyan neighbors.
- Music in the Arb will sponsor up to three concerts in the cabin, pavilion, and/or Pierce Chapel each year, supported by nominal attendance fees.



# WAFT – Wesleyan Arboretum Farm to Table

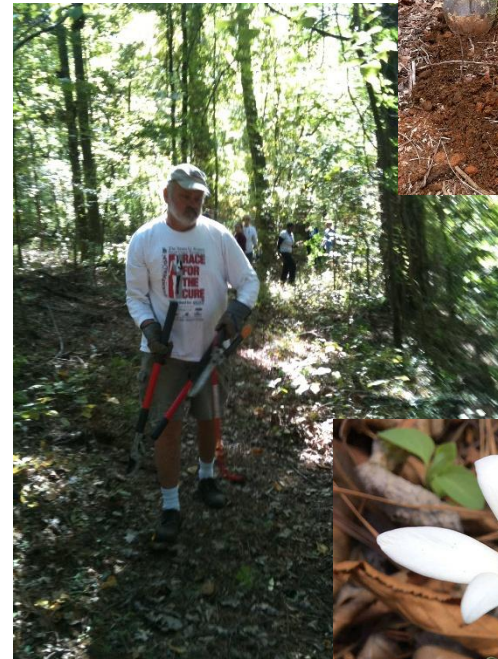
- The Farm to Table movement exists to strengthen ties between local growers and consumers and to educate the public about sustainable agriculture and local food sourcing.
- Central Georgia is home to many growers who practice organic and low environmental impact farming and market their produce directly to consumers and locally-sourced restaurants.
- Farm to Table dinners are a great way to bring community members who are trying to source their own food in a sustainable manner together with like-minded growers and restaurateurs.
- These dinners allow you the opportunity to learn what foods are seasonally available in central Georgia, how to access these food supplies directly from the producers, and how to turn them into healthy and delicious meals.
- WAFT, in cooperation with local growers and restaurants, will sponsor at least one Farm to Table dinner annually in the cabin/pavilion area of the Wesleyan College Arboretum.





# AGATE – Adopted Grove and Trail Extension

- The Wesleyan College Arboretum currently has areas that are overgrown with invasive plants such as privet and thorny olive which are not native to Georgia.
- As an integral part of our multi-year Arb development plan we are clearing these areas of invasives and replanting them with native trees, shrubs, and herbs, some of which are rare or endangered in central Georgia.
- The AGATE program is an opportunity for your family or group to learn about native plant restoration, help us find and select native plants, and share in our efforts to establish them in the Arboretum.
- By adopting a tree, grove, plot, or trail section you can introduce, nurture, and maintain some of these unique plants, increasing botanical diversity and making this area your own special place in the Arb.
- Your plot will be marked with a small plaque, acknowledging your contribution and helping other visitors learn more about these native Georgia plants and restoration practices.



# SEAC – Sustainability & Environmental Advocacy Colloquia

- This annual colloquium series will bring in experts and organizers who are helping shape our future interactions with the planet, both locally and globally.
- Topics for this series may include urban forestry, wetland restoration, reducing energy consumption, distributed energy production technologies, renewable energy sources, environmental justice, and practical advocacy for social and political change.
- The lectures and discussions will provide opportunities for you to learn about current and emerging sustainability issues.
- The colloquia will also provide opportunities for you to network with both experts and advocacy groups from central Georgia and other regions.
- If you are interested in learning about sustainability issues, what will be required of all of us to ensure the long term viability and prosperity of humanity, and what you can do to help make this future happen, then this lecture series is for you!

